

GRADE 3

Each lesson plan is accompanied by
popular educational episodes found on:

KidoodleTV™



Science

**Ryan's World –
Ryan Experiments
with Moldy Bread!**

Curriculum Connection:

Science:

This lesson focuses on **scientific investigation, observation, and understanding** living organisms and their interactions with the environment. Students will engage in making predictions, recording results, and analyzing data during mold growth experiments.

Language Arts:

The lesson also aligns with the language arts curriculum by integrating **communication skills**. Students will effectively communicate their predictions, observations, and analysis through class discussions and in writing on the provided “Moldy Bread Experiment” recording sheet.

Language Arts:

- Students will enhance their communication abilities by actively participating in class discussions, sharing their predictions, observations, and analysis of the experiment.
- Students will refine their written expression skills by articulating their findings and analysis in written responses on the provided recording sheet.



Learning Skills:

Scientific Inquiry:

- Students will demonstrate critical thinking by formulating informed predictions about mold growth based on prior knowledge and observations.
- Students will practice precise data recording as they observe and document the growth of mold in various experimental conditions.
- Students will exercise analytical skills by interpreting experiment results to draw conclusions about the effects of different conditions on mold growth.

Communication:

- Students will actively participate in class discussions to share their predictions, observations, and thoughts about the experiment.
- Students will showcase effective communication by articulating their findings and analysis in written responses on the recording sheet.

Learning Goals:

Science:

- Students will learn about the conditions that promote mold growth on bread.
- Students will practice scientific observation skills by predicting where mold will grow the most and accurately recording the results of mold growth experiments.
- Students will understand the significance of controlled variables and safety measures during experiments.

Scan to watch
the episode:



Play episode

Materials:

S01 E13

Ryan's World

Ryan Experiments
with Moldy Bread!

Access this
episode free on:

KidoodleTV™

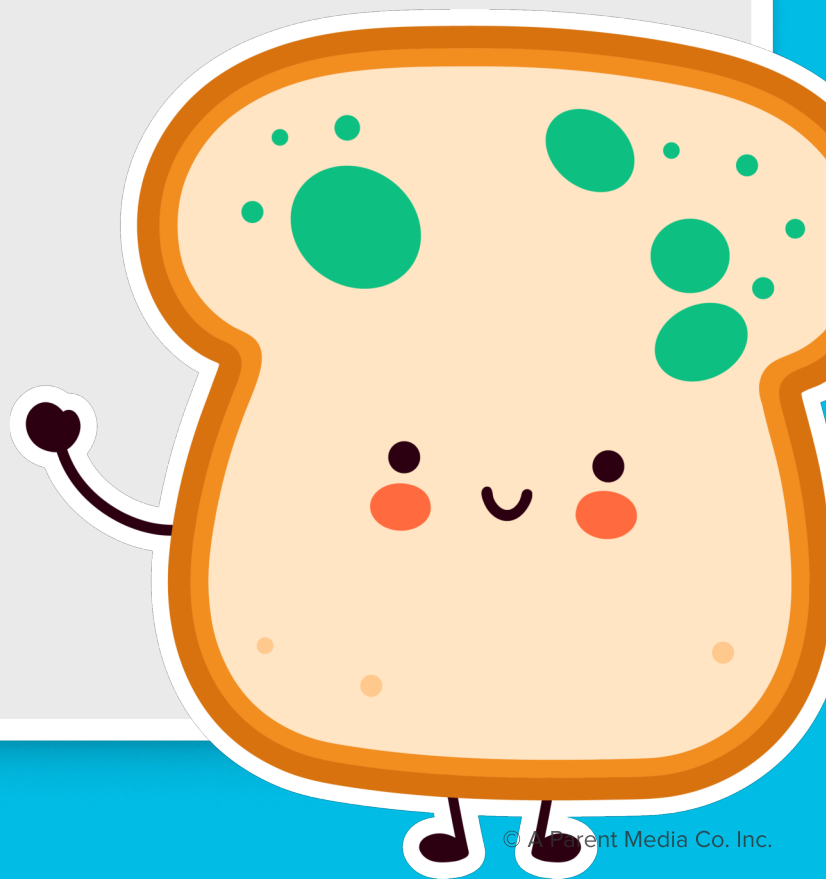


[Play episode](#)



Lesson Supplies:

- ☒ **Ryans World-** Ryan Experiments with Moldy Bread! S01 E18
- ☐ **Chart paper and markers**
- ☐ **Moldy Bread Experiment™ recording sheet** (provided) – one per student



Lesson:

Introduction:

Initiate the lesson by asking:
"Have you ever wondered how mold grows on bread?"

Explain that you will watch a video from "Ryan's World" where mold growth on bread is explored.

Continuing the Episode with Predictions:

Continue the episode. Pause after Brie places different fluids on bread. Have students predict which fluid will lead to the most mold growth and record their predictions on the recording sheet.

Class Discussion and Analysis:

Lead a class discussion about the experiment results. Encourage students to compare their predictions with the outcomes and identify trends or patterns.

Viewing the Episode with Predictions:

Play "Ryan's World" – Ryan Experiments with Moldy Bread episode. Pause the episode after Ryan places bread in different locations. Encourage students to predict where mold will grow the most and record their predictions on the "Moldy Bread Experiment" recording sheet.

Safety Discussion:

Before revealing the results, engage students in a safety discussion. Stress the importance of safety goggles, gloves, and adult supervision during experiments.

Charting the Results:

Collaboratively create a class chart on chart paper with columns for "Experiment" and "Mold Growth." Work together to fill in the chart with information about mold growth under different experimental conditions.

Play episode 

Discussion and Predictions:

Conduct a class discussion to allow students to share their predictions, emphasizing their reasoning.

Continuing the Episode with Results:

Resume the episode and unveil the results of both experiments. Instruct students to record the actual results on their "Moldy Bread Experiment" recording sheet.

Conclusion:

Sum up the lesson by emphasizing the significance of scientific observation, understanding variables, and safety precautions in experiments. Encourage students to reflect on their understanding of mold growth.

Scan to watch the episode.



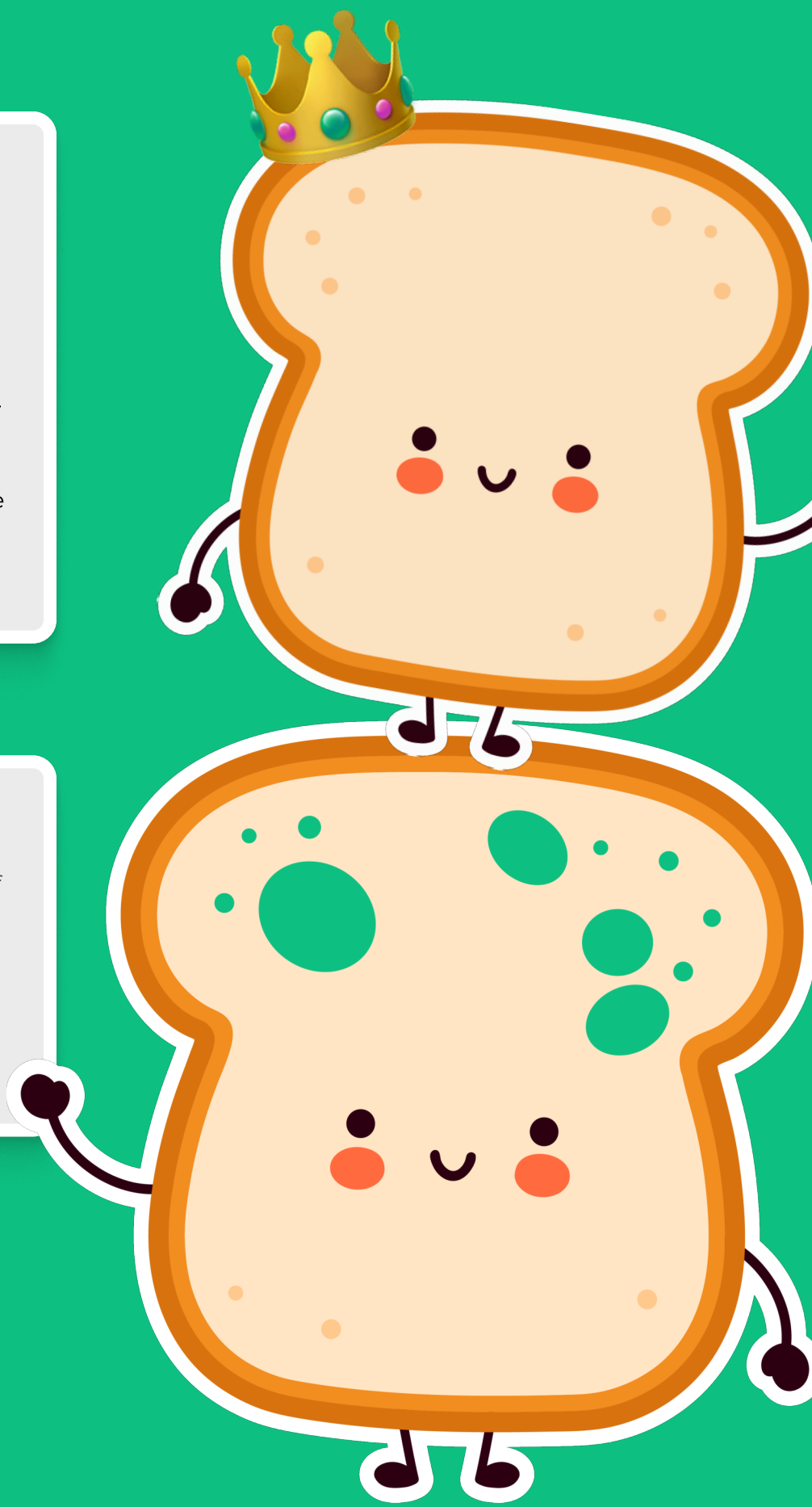
Extension:

To further explore the concept of mold growth, students can engage in a "Moldy Bread Prevention Challenge." In pairs or small groups, students will research and brainstorm eco-friendly ways to prevent mold growth on bread. They will create posters or presentations showcasing their ideas, including natural methods and sustainable packaging solutions. Each group will present their suggestions to the class, explaining the science behind their proposals and why they believe their methods would be effective.

Assessment

Assessment for this lesson will encompass evaluating students' grasp of mold growth factors, their ability to make accurate predictions and analyze results, their awareness of safety protocols during experiments, and their communication skills exhibited through recorded observations and discussions.

Scan to watch
the episode:



This lesson was
brought to you by:

KidoodleLe^{tv}™

Safe Streaming



Start watching for
free on [**kidoodle.tv**](https://www.kidoodle.tv)

[Click to watch now](#)